

# Transport instructions

## Content

OR-PC® / OR-MD® 15	2
OR-PC® / OR-MD® 15 (with cable cover) / 19	3
OR-PC® / OR-MD® 21 / 24	4
OR-PC® / OR-MD® 27 / 32	5
OR-PC® / OR-MD® 42 / 43	6
OR-PC® / OR-MD® 49 / 55	7
OR-PC® 24 Hot Swap Battery	8
OR-PC® Box Mini	9
OR-PC® Box / with optional 10" display	10

# Transport instructions

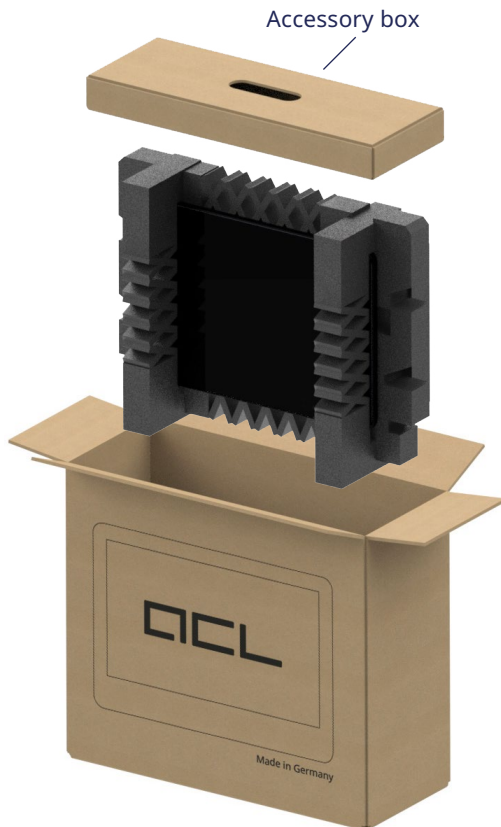
## OR-PC® / OR-MD® 15



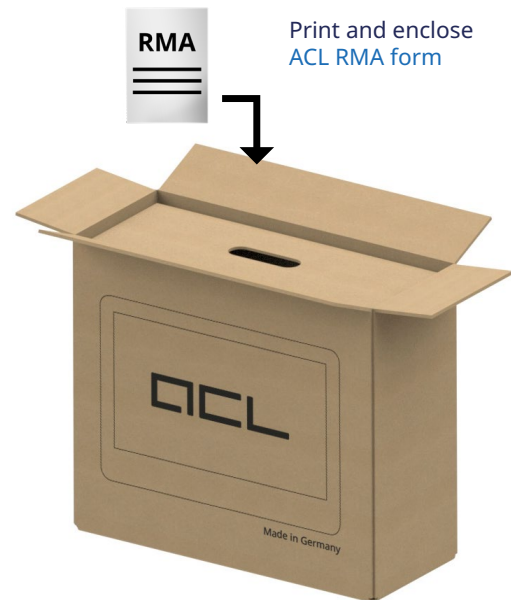
To avoid transport damage, we strongly recommend to use original ACL packaging material only. If you don't have suitable packaging we can send you all required materials for your device. Improper packaging can cause damage to individual components. Hence, ensure gentle handling during transport and loading and ensure that the transport conditions as described in the devices' manual, section 3.2 are met.

If you have any questions, please contact our service team: +49 341 23078-60 or [service@acl.de](mailto:service@acl.de)

### 1 Overview



### 2 Details



### 3 Prepare shipment

Seal the box and send it as a parcel



# Transport instructions

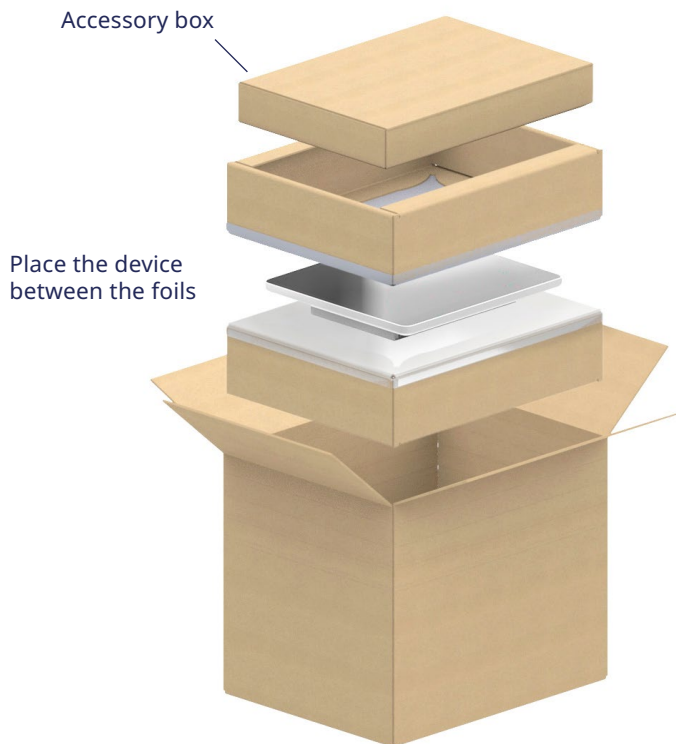
## OR-PC® / OR-MD® 15 / 19



To avoid transport damage, we strongly recommend to use original ACL packaging material only. If you don't have suitable packaging we can send you all required materials for your device. Improper packaging can cause damage to individual components. Hence, ensure gentle handling during transport and loading and ensure that the transport conditions as described in the devices' manual, section 3.2 are met.

If you have any questions, please contact our service team: +49 341 23078-60 or [service@acl.de](mailto:service@acl.de)

### 1 Overview



### 2 Adjust cardboard in height



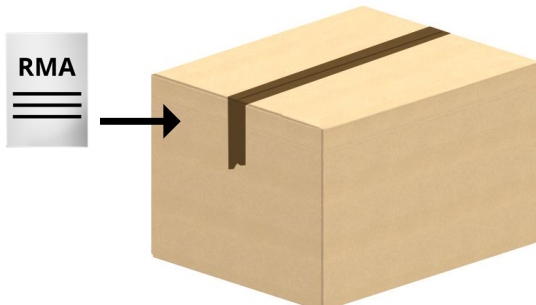
Avoid hallows:  
Cut all four corners  
up to the deepest  
reachable fold mark



Fold flaps at matching  
fold mark over

### 3 Prepare shipment

Print and enclose [ACL RMA form](#)  
Seal the box and ship it



# Transport instructions

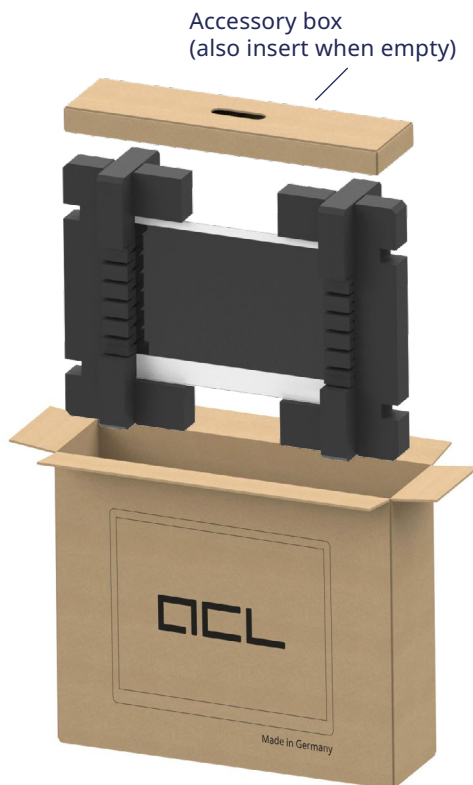
## OR-PC® / OR-MD® 21 / 24



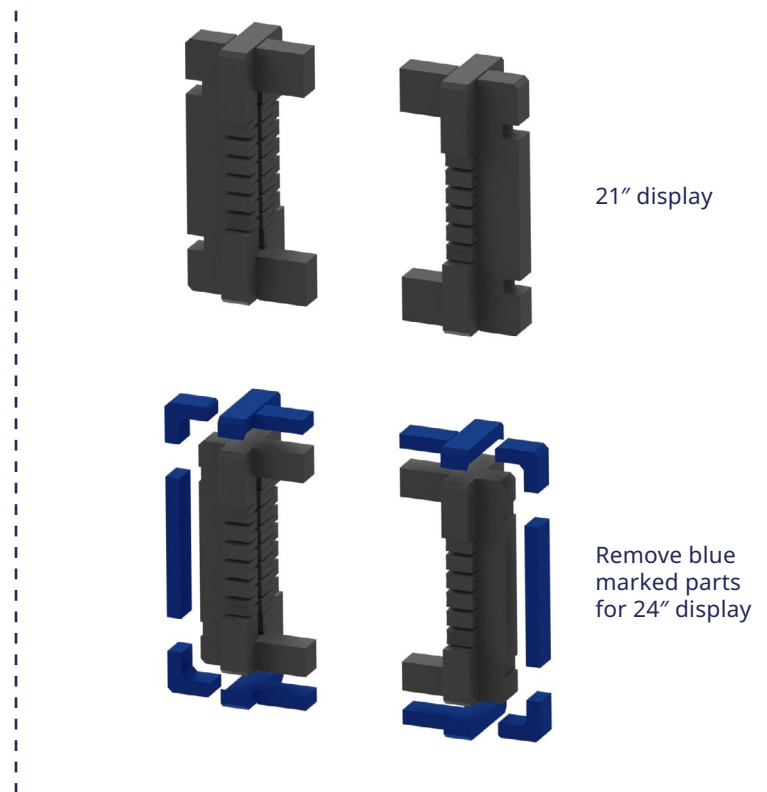
To avoid transport damage, we strongly recommend to use original ACL packaging material only. If you don't have suitable packaging we can send you all required materials for your device. Improper packaging can cause damage to individual components. Hence, ensure gentle handling during transport and loading and ensure that the transport conditions as described in the devices' manual, section 3.2 are met.

If you have any questions, please contact our service team: +49 341 23078-60 or [service@acl.de](mailto:service@acl.de)

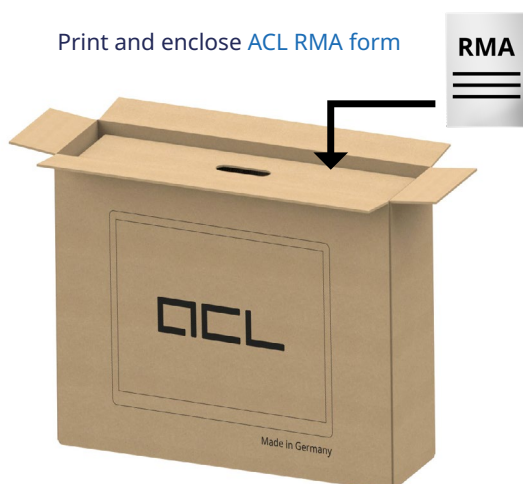
### 1 Overview



### 2 Adjust foam parts in case of 24" display



### 3 Prepare single shipment



Seal the box and send it as a parcel



Optional: max. 6 boxes when shipped on a pallet



# Transport instructions

## OR-PC® / OR-MD® 27/32



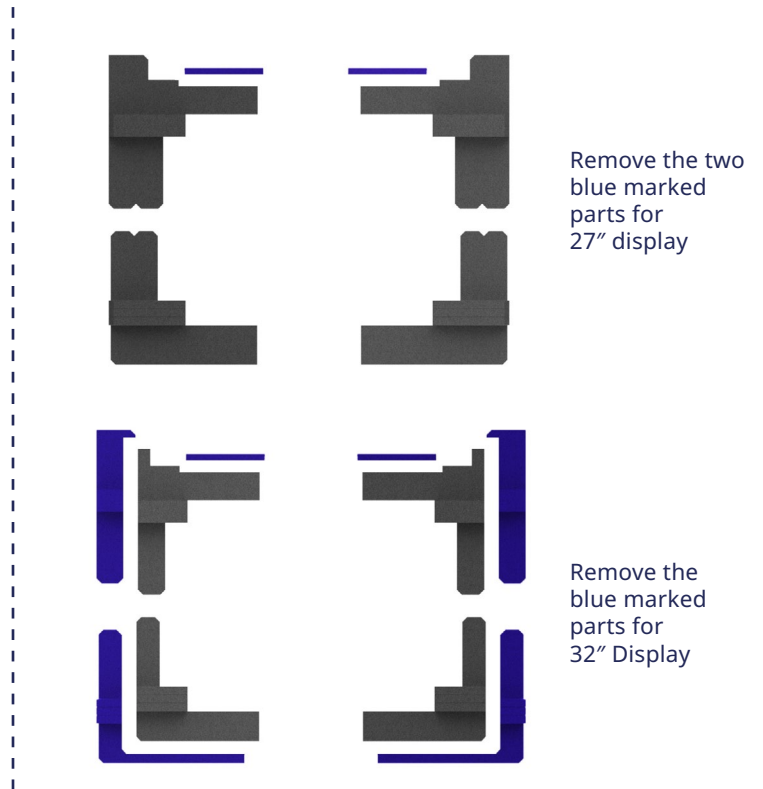
To avoid transport damage, we strongly recommend to use original ACL packaging material only. If you don't have suitable packaging we can send you all required materials for your device. Improper packaging can cause damage to individual components. Hence, ensure gentle handling during transport and loading and ensure that the transport conditions as described in the devices' manual, section 3.2 are met.

If you have any questions, please contact our service team: +49 341 23078-60 or service@acl.de

### 1 Overview



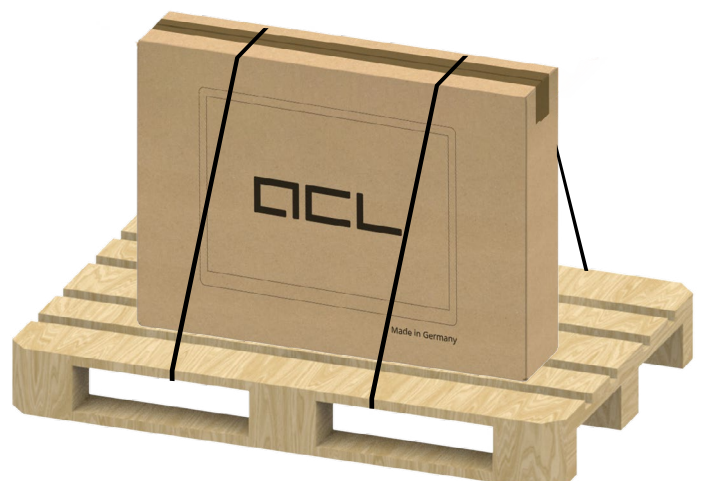
### 2 Adjust foam parts



### 3 Prepare shipment



Seal the box and ship it strapped to a pallet



MAX. 4 BOXES  
MAX. 8 BOXES (STACKED)

# Transport instructions

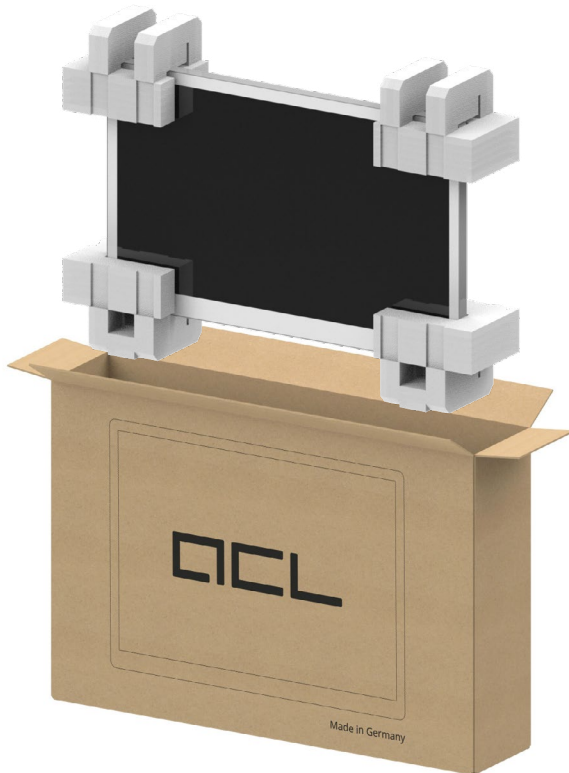
## OR-PC® / OR-MD® 42 / 43



To avoid transport damage, we strongly recommend to use original ACL packaging material only. If you don't have suitable packaging we can send you all required materials for your device. Improper packaging can cause damage to individual components. Hence, ensure gentle handling during transport and loading and ensure that the transport conditions as described in the devices' manual, section 3.2 are met.

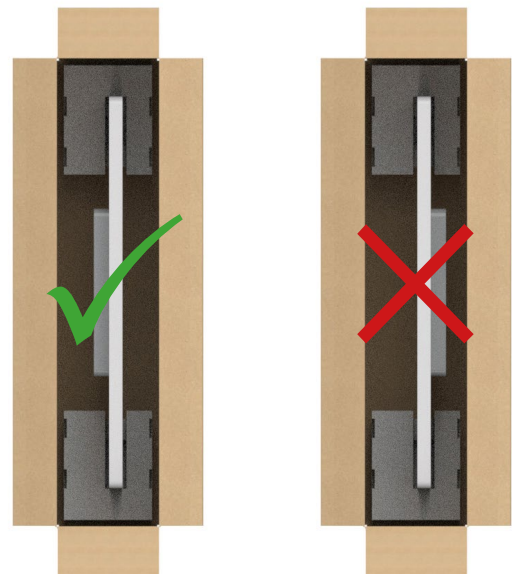
If you have any questions, please contact our service team: +49 341 23078-60 or [service@acl.de](mailto:service@acl.de)

### 1 Overview



### 2 Details

Place the device in the center so that there is approximately the same distance to the cardboard walls on both sides



Accessoires can be loosely placed in the cardboard box

### 3 Prepare shipment

Print and enclose [ACL RMA form](#)



Seal the box and ship it as a package strapped to a pallet



MAX. 4 BOXES  
DO NOT STACK

# Transport instructions

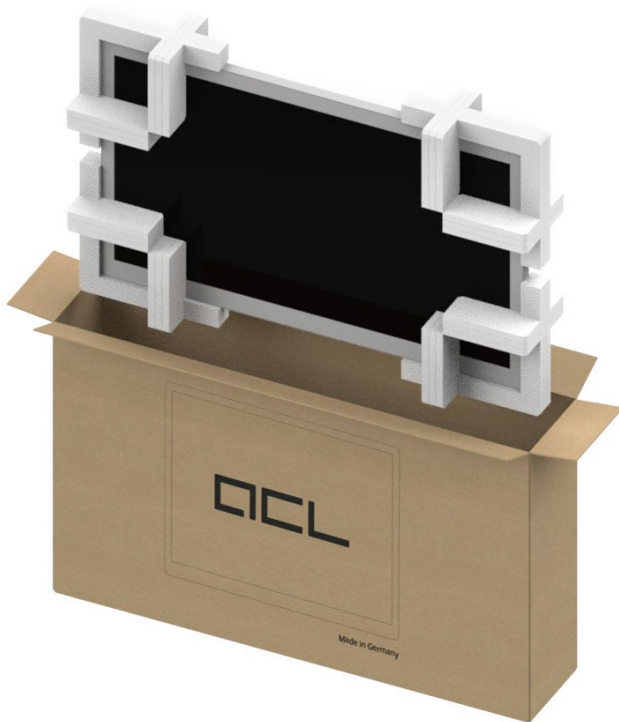
## OR-PC® / OR-MD® 49 / 55



To avoid transport damage, we strongly recommend to use original ACL packaging material only. If you don't have suitable packaging we can send you all required materials for your device. Improper packaging can cause damage to individual components. Hence, ensure gentle handling during transport and loading and ensure that the transport conditions as described in the devices' manual, section 3.2 are met.

If you have any questions, please contact our service team: +49 341 23078-60 or [service@acl.de](mailto:service@acl.de)

### 1 Overview



### 2 Details

Accessoires can be loosely placed in the cardboard box



### 3 Prepare shipment

Print and enclose [ACL RMA form](#)

Lash to pallet (min. 145×60 cm) and ship



MAX. 3 BOXES  
DO NOT STACK

# Transport instructions

## OR-PC® 24 Hot Swap Battery

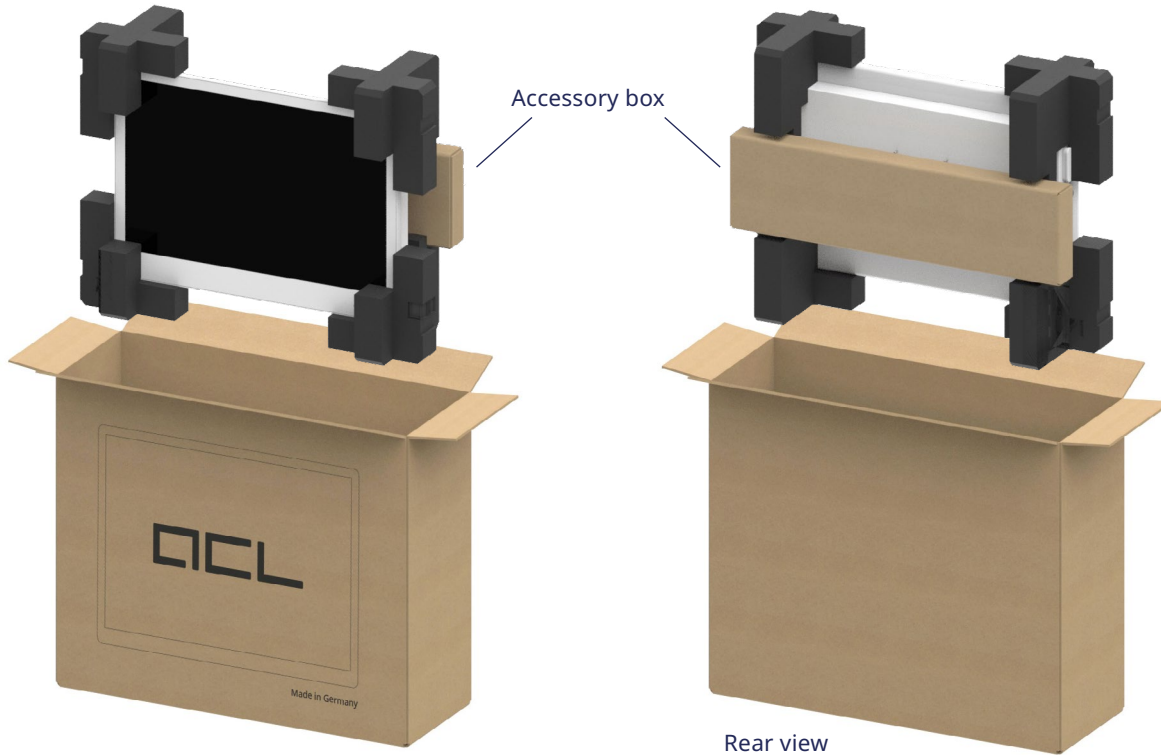


To avoid transport damage, we strongly recommend to use original ACL packaging material only. If you don't have suitable packaging we can send you all required materials for your device. Improper packaging can cause damage to individual components. Hence, ensure gentle handling during transport and loading and ensure that the transport conditions as described in the devices' manual, section 3.2 are met.

If you have any questions, please contact our service team: +49 341 23078-60 or [service@acl.de](mailto:service@acl.de)

1

### Overview



2

### Prepare shipment

Print and enclose [ACL RMA form](#)



Seal the box and send it as a parcel



*Optional: max. 5 boxes when shipped on a pallet*





# Transport instructions

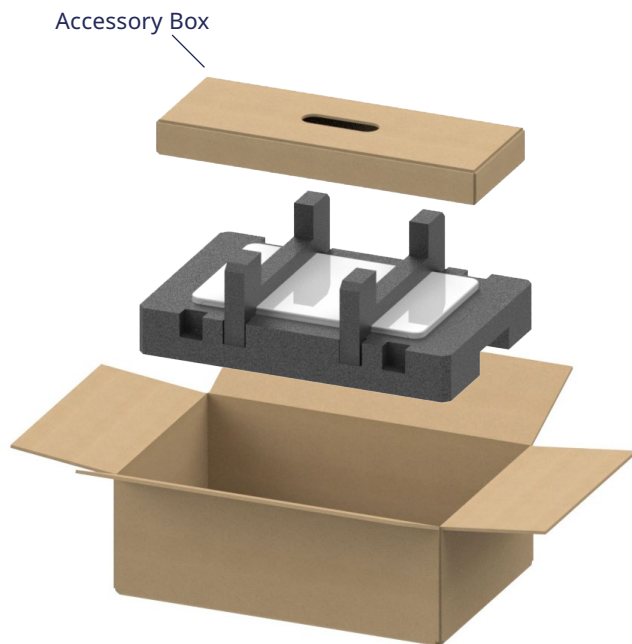
## OR-PC® Box Mini



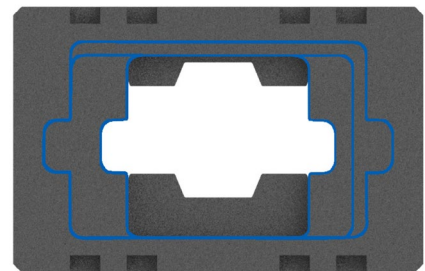
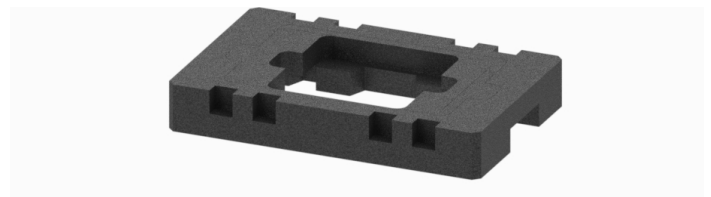
To avoid transport damage, we strongly recommend to use original ACL packaging material only. If you don't have suitable packaging we can send you all required materials for your device. Improper packaging can cause damage to individual components. Hence, ensure gentle handling during transport and loading and ensure that the transport conditions as described in the devices' manual, section 3.2 are met.

If you have any questions, please contact our service team: +49 341 23078-60 or [service@acl.de](mailto:service@acl.de)

### 1 Overview



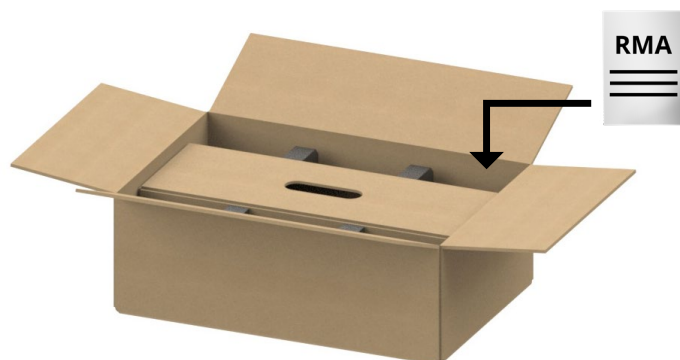
### 2 Adjust foam parts



Remove the respective foam parts (blue lines) if the device does not fit into the recess

### 3 Prepare shipment

Print and enclose [ACL RMA form](#)



Seal the box and send it as a parcel



# Transport instructions

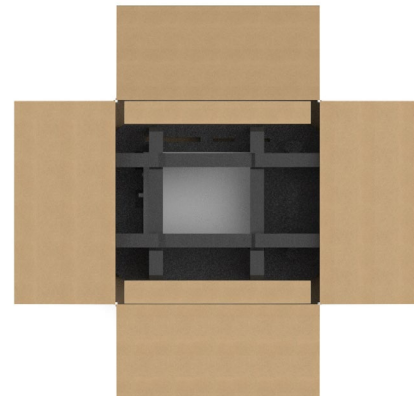
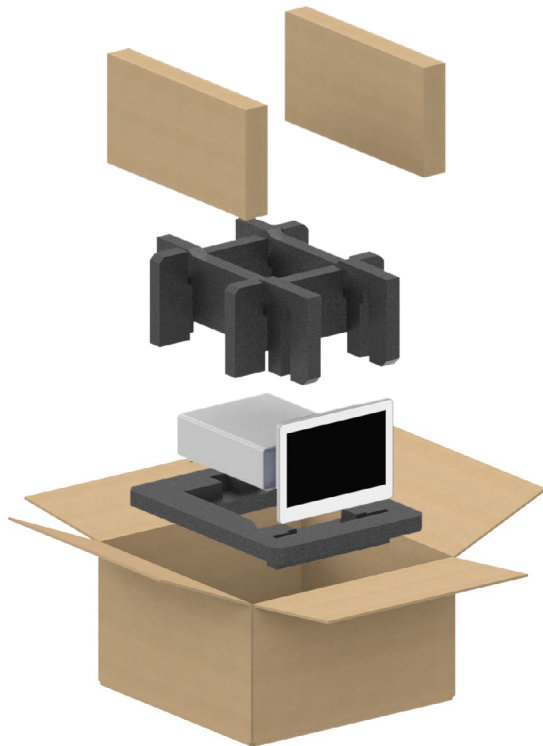
## OR-PC® Box / with optional 10" display



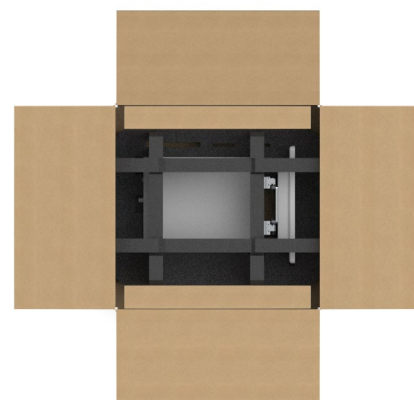
To avoid transport damage, we strongly recommend to use original ACL packaging material only. If you don't have suitable packaging we can send you all required materials for your device. Improper packaging can cause damage to individual components. Hence, ensure gentle handling during transport and loading and ensure that the transport conditions as described in the devices' manual, section 3.2 are met.

If you have any questions, please contact our service team: +49 341 23078-60 or [service@acl.de](mailto:service@acl.de)

### 1 Overview



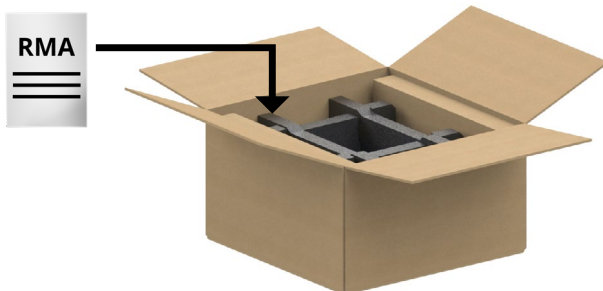
OR-PC Box®



OR-PC Box® with optional 10" display

### 3 Prepare shipment

Print and enclose [ACL RMA form](#)



Seal the box and send it as a parcel

